



Quick, Easy, Accurate Resource Information

Enhance Coordination of Care
Action Learning Team



NORTHWEST
COMMUNITY
HEALTH
INNOVATION
REGION

NORTHWEST MICHIGAN
**Behavioral
Health
Initiative**



This is the work of the **Enhance Coordination of Care Action Team**, one of the 12 Northwest CHIR's Behavioral Health Initiative Action Teams. Action Teams consist of cross sector partners willing and able to take action collectively and supported by the CHIR BBO staff. Learn more about the [CHIR](#) and the [Behavioral Health Initiative](#), and stay connected by subscribing [here](#).

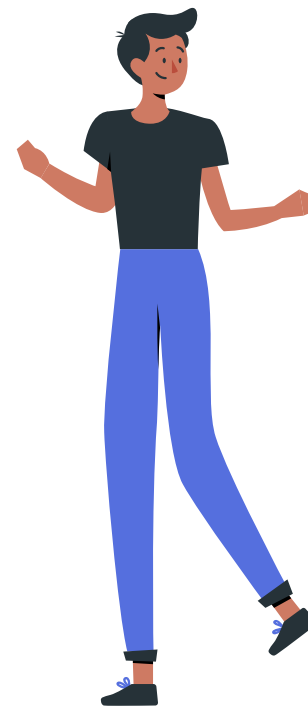
Our Team

Leaders

- Sally Mellema – District Health Department # 10 Community Connections Supervisor

Members

- Megan England – District Health Department #10
- Lisa Hanes
- Demarie Jones – Disability Network Northern Michigan
- Lana Payne
- Alyson Kass – Munson Community Health, SUN
- Marian Kromkowski – Leelanau County Probate and Family Court Judge
- Kathy Sanders – BDAI
- Jessica Perez – NAMI





The Challenge

The system of behavioral health care is difficult to navigate. People and providers alike are unaware of the resources available to them and what insurances they accept. Additionally, those with co-occurring mental illness and substance misuse are often torn between diagnoses: forced to treat one issue before the other as a result of the lack of providers treating both.



Our Goal

- **Increase Navigability**

Increase the navigability and knowledge of the behavioral health system.

- **Streamline the System**

Streamline the network of care coordination so that both patients and resource navigators know where they need to go to get the resources they need.

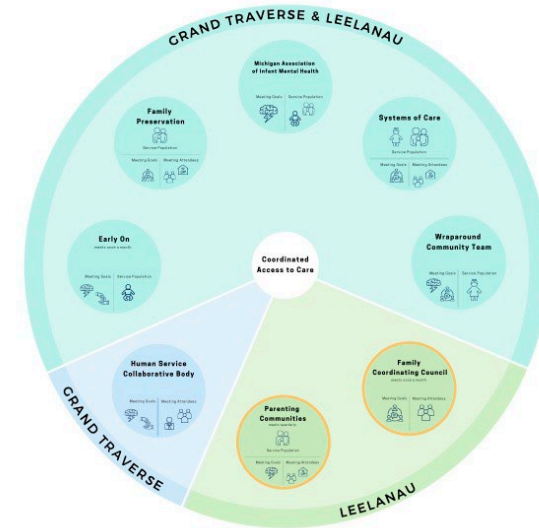


Map of Care Coordination Groups

We developed a map of the behavioral health and human service navigator/system in the Grand Traverse region. This is a pilot than can be replicated in other regions. Each circle represents a care coordination group and provides information about the service population, size, and meetings of the group.

CARE COORDINATION NETWORK

A MAP OF THE CARE COORDINATION GROUPS IN GRAND TRAVERSE AND LEELANAU COUNTIES



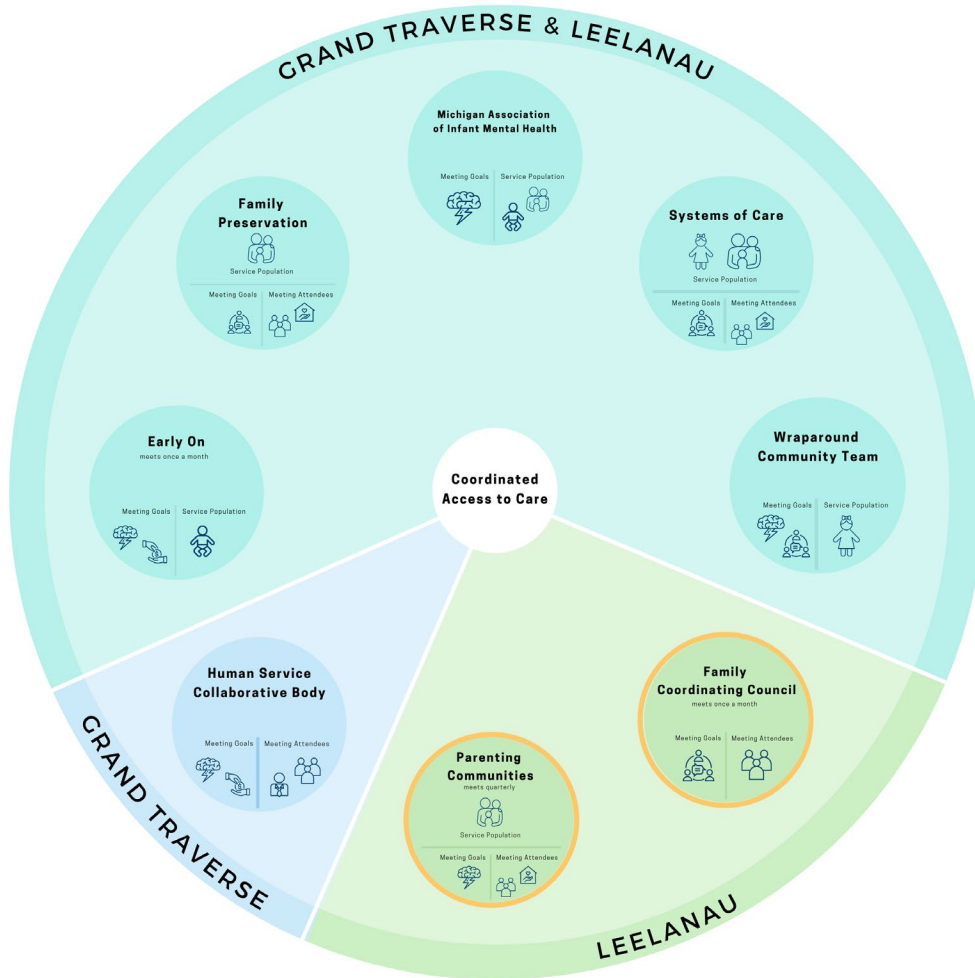
KEY

- Meeting Goals:
 - Behavioral resource access for individual cases
 - Apply for respite for individual cases
 - Share available resources
- Service Population:
 - Young Children
 - Children
 - Families
- Privacy:
 - Open to the public
- Meeting Attendees:
 - Director
 - Resource Navigator / Case Workers / Community Health Workers
 - Local Non-Profits

NORTHWEST CHAIRSHEAF HEALTH INNOVATION REGION **Behavioral Health Initiative**

This is the work of the **Enhance Coordination of Care Action Team**, one of the 12 Northwest CHR's Behavioral Health Initiative Action Teams. Action Teams consist of cross sector partners willing and able to take action collectively and supported by the CHR BHO staff. Learn more about the [CHRI](#) and the [Behavioral Health Initiative](#), and stay connected by subscribing [here](#).

- Meeting Goals**
 - Brainstorm resource access for individual cases
 - Apply for money for individual cases
 - Share available resources
- Service Population**
 - Young Children
 - Children
 - Families
- Meeting Attendees**
 - Directors
 - Resource Navigators / Case Workers / Community Health Workers
 - Local Non-Profits
- Privacy**
 - Open to the public

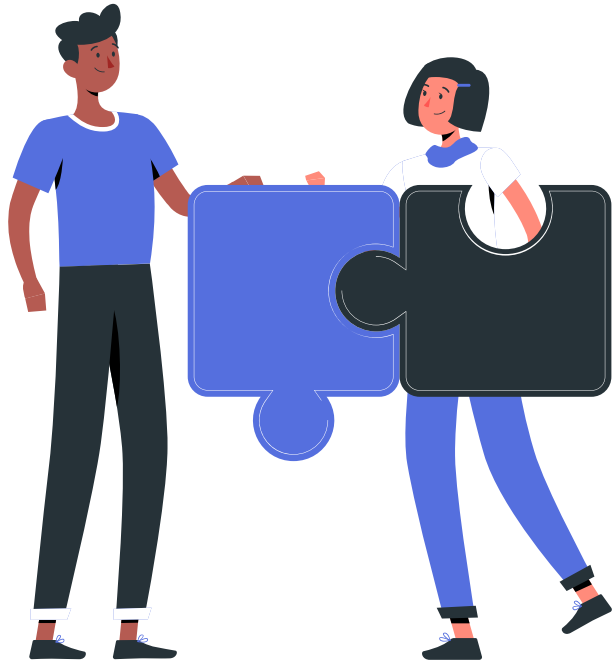


Achievements

Met with resource navigators and care coordinators from the Grand Traverse region to collect information about the network of care coordination groups.



Findings



There are significant **overlaps** and **gaps** in the care coordination network in the region. This is also reflected in gaps in resource navigator knowledge of the behavioral health and human service navigator/system.

Collaboration between care coordination groups with overlapping clientele is insufficient. Resource navigators are often unaware of the service population and meeting times of care coordination groups they do not actively attend.

Next Steps



Networking Meetings

Host more networking meetings for local care coordination networks and agencies



Develop a Survey

Develop a survey to gather information about the care coordination network



Expand the Project

Continue to populate the map of care coordination groups in the region and expand to other regions

What Can You Do?



Share Our Work!

Share our map with the resource navigators you know!



Help Us Populate the Map!

If you are a care coordinator, contact us to share the information about the care coordination groups you attend!