



Crisis Wellness Center

Strengthen Crisis Services and Supports
Action Learning Team



NORTHWEST MICHIGAN
**Behavioral
Health
Initiative**



This is the work of the **Strengthen Crisis Services and Supports Action Team**, one of the 12 Northwest CHIR's Behavioral Health Initiative Action Teams. Action Teams consist of cross sector partners willing and able to take action collectively and supported by the CHIR BBO staff. Learn more about the [CHIR](#) and the [Behavioral Health Initiative](#), and stay connected by subscribing [here](#).

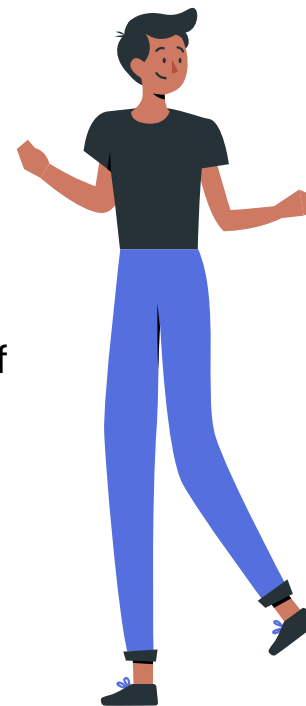
Our Team

Leaders

- Kate Dahlstrom
- Sarah Hubbell
- Terri Lacroix-Kelty
- Nancy Stevenson

Participant Agencies

- Munson Medical Center
- NLCMH
- ATS
- PineRest
- GT County Sheriff
- CHS
- Goodwill Northern MI
- BDAI
- NAMI
- Leelanau Courts
- Child and Family Services of Northwestern MI
- TBCAC
- Grand Traverse County Commission
- Individual Practitioners and Natural Supports
- Grand Traverse Regional Community Foundation





The Challenge

There are not enough resources in the region to treat those in behavioral health crises. Those that do exist are geographically isolated, leaving large portions of the region without access to care in case of a crisis.



Our Goal

- **Increase Access to Crisis Services**

Increase access to crisis services for all, regardless of health insurance status, competing diagnoses, or geographic isolation.

- **Promote Collaboration**

Promote collaboration between existing behavioral health providers in the region.





We're working to create a

Crisis Wellness Center

A crisis stabilization unit for
all ages with access to a
crisis residential unit



Our Progress



01

Funding

Receiving funding from various community partners and governmental entities to support the development of the Crisis Center.



02

Abstract & Location

Developing abstract of services and structure. Explore potential locations for the Crisis Wellness Center.



03

Fiduciary

Exploring options an appropriate fiduciary to receive donations.



04

Operational & Business Plan

Working with Health Management Associates to develop an operations/business plan for the Crisis Wellness Center.

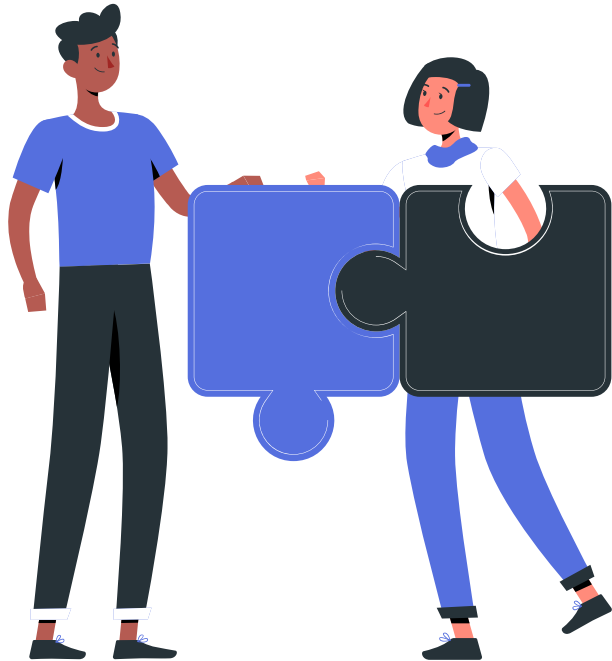
Achievements

Secured funding to develop an operational/business plan for the Crisis Wellness Center.

Identified exemplar crisis support services across the country to use as models for regional development.



Findings



The region is in desperate need of a crisis center, now more than ever before. With the increase in behavioral health funding right now, there has never been a more perfect moment to launch a crisis center.

The good news is, there is a lot of stakeholder support for expanding the continuum of crisis services in the region. For example, North Lakes Community Health has initiated a Crisis Welcoming Center in Traverse City. They have also recently received funds to provide adult crisis residential services.

Next Steps



Business Plan

Develop a business plan for the Crisis Wellness Center



Operational Plan

Finalize the operational plan for the Crisis Wellness Center



Fundraise

Raise money to fund the Crisis Wellness Center



Building

Secure a building for the Crisis Wellness Center



Voter Millage

Sustain and expand services with a voter millage