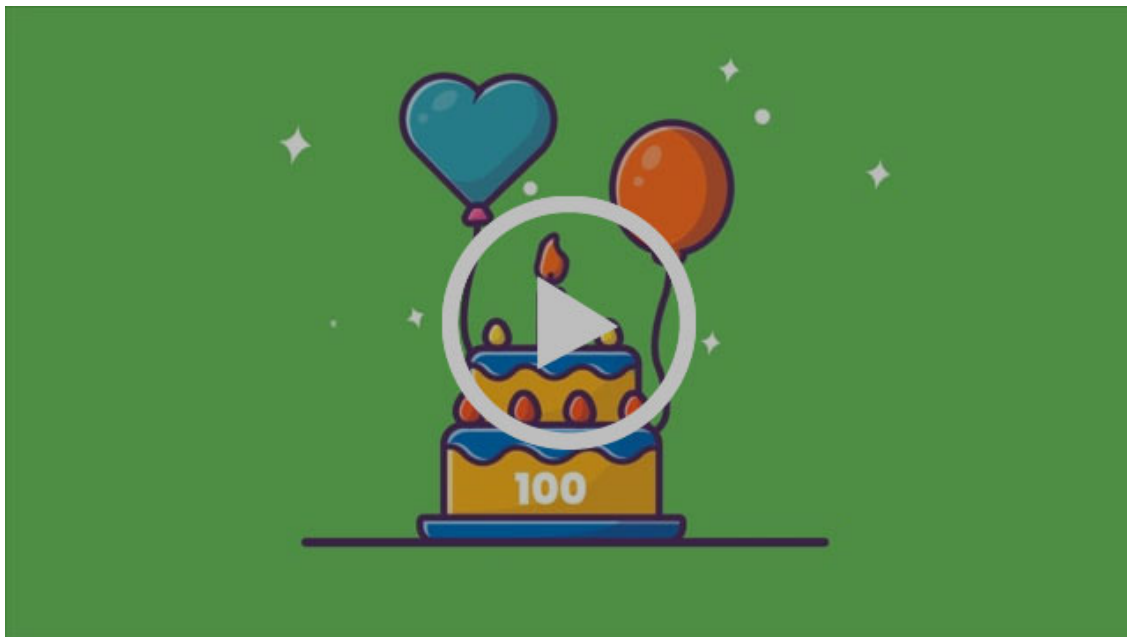


# COLLABORATION IN ACTION



NORTH CENTRAL  
COMMUNITY  
HEALTH  
INNOVATION  
REGION

*Aligning Systems. Transforming Lives.*



This video was made in partnership with [NextDay Animations](#).

We are excited to premiere our CHIR vision video! Many thanks and deep appreciation to the 70 CHIR partners who helped us co-create this video. We went on an explorative journey to ask people what our vision, healthy people in equitable communities, means to them. We asked questions like, if we achieved our vision what would such a community look like, what would you feel and hear, and who would belong to this community? What resulted from this process was a rich picture of our vision in a storytelling format.

We know our vision is achievable and will impact generations to come.



There are big things happening in the NCCHIR! We are 1 of 2 Michigan recipients to receive a CDC Accelerator Grant and Community Connections is now operating in Arenac, Clare, Gladwin, Isabella, Osceola, and Roscommon counties.



**NORTH CENTRAL**  
COMMUNITY  
HEALTH  
INNOVATION  
REGION

The North Central Community Health Innovation Region covers a ten-county geographic area including Arenac, Clare, Gladwin, Isabella, Lake, Mason, Mecosta, Newaygo, Oceana, and Osceola counties.

## Updates

NORTH CENTRAL CHIR

**Steering  
Committee**



The [NCCHIR Steering Committee](#) is comprised of cross-sector leaders across the 10-county region committed to a shared vision – *healthy people in equitable communities*.

**Working toward a shared vision by shifting system conditions and connecting residents to needed resources.**

- Check out the updated [NCCHIR vision infographic](#).
- The Steering Committee convened in January to participate in a collective impact framework workshop led by Dr. Pennie Foster-Fishman where members identified ways to expand their collective efforts through a shared agenda, aligned actions, and constant communications.
- Looking ahead, the Steering Committee will engage in a collaborative mapping process to identify strategic alignment opportunities and answer

- What's on the Steering Committee reading list this year? *The Hidden Life of Trees*.

## SDOH Planning Committee



The NCCHIR is one of forty entities nationally (and one of two in Michigan) to receive a CDC *Closing the Gap with Social Determinants of Health (SDOH) Accelerator Plans* grant totaling \$125,000.

**Collaborative planning among public health, business, government, non-profit organizations, healthcare partners, and community members is essential for addressing social determinants of health (SDOH).**

- A cross-sector committee has formed to co-create a SDOH Accelerator Plan with the ultimate aim of improving chronic disease outcomes among persons experiencing health disparities and inequities.
- The SDOH Planning Committee is focused on two critical SDOH strongly tied to chronic disease conditions: [Community-Clinical Linkages](#) & [Social Connectedness](#).
- This planning committee is open to new cross-sector partners and community members interested in collaborating. There are synchronous and asynchronous opportunities to engage with this work. Email Erin Barrett ([ebarrett@dhd10.org](mailto:ebarrett@dhd10.org)) for more information.



Every 3 years the North Central MiThrive Workgroup conducts a community health assessment and improvement plan in the following counties: Arenac, Clare, Gladwin, Isabella, Lake, Mason, Mecosta, Newaygo, Oceana, and Osceola. This plan is a roadmap for collective action and a guide for cross-sector community organizations to work towards a shared vision, healthy people in equitable communities.

**The [2021 MiThrive Community Health Assessment](#) revealed four priority areas critical to the health of our communities.**

economic security, and mental health). The intent of this environmental scan is to deepen our understanding of the great work that is already happening, who is doing the work, and where the work is happening in the North Central region.

- **Access Now:** [One-Pager](#) & [Data Report](#)
- To learn more about how the North Central MiThrive Workgroup is collaboratively moving to action around the four priority areas, please contact: Erin Barrett at [ebarrett@dhd10.org](mailto:ebarrett@dhd10.org).



In the North Central CHIR, District Health Department #10 wrapped up a project in December focused on surveying the needs of individuals in census tracts identified by the CDC as [most vulnerable](#). Two types of surveys were conducted: sites where vaccines were not distributed and sites where vaccine was being administered.

Early data shows us that at community sites (pantries, libraries, senior centers) where vaccines were not present, community SDOH resource needs were higher, and only 10% desired to even be connected to vaccines. This survey data highlights how addressing basic needs can lead to readiness for improved health outcomes. Those surveyed at sites with vaccines, reported fewer SDOH needs and higher ratings of personal wellbeing. This data is useful information for future SDOH work from the NCCHIR.

You can view the data [here](#).

Select PCHI- Community Connections as affiliate for the surveys. The "Brief" tab is sites without vaccine.

## HIGHLIGHTS

- In the last quarter, we saw a large number of referrals- 265! Of those 265 referrals, 130 accepted services.
- The Central Michigan District Health Department's referral link is now LIVE: <https://northernmichiganchir.org/community-connections/community-connections-referrals/>.
- Community Connections is committed to providing accessible, local data. Check out our dashboards [here](#).

## Upcoming Events

Check out our [Shared Community Calendar](#) for a listing of events and meetings



Do you have an upcoming meeting, event, workshop, or gathering that you want others to know about?

Fill out [this form](#) and we will add it to the [Shared Community Calendar](#).

With this shared calendar, we aim to strengthen our collective understanding of current efforts throughout the region and support community partners to become better connected.

**Help us amplify this message by forwarding this email to your network.**



Forward

[Subscribe](#)

[Past Issues](#)

[Translate ▼](#)

---

NMCHIR  
3434 M 119 Ste A  
Harbor Springs, MI 49740-9373

Was this forwarded to you?  
You can subscribe here.

Want to change how you receive these emails?  
You can update your preferences or unsubscribe from this list.

